

PART NUMBER CODING

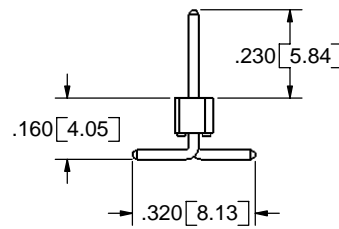
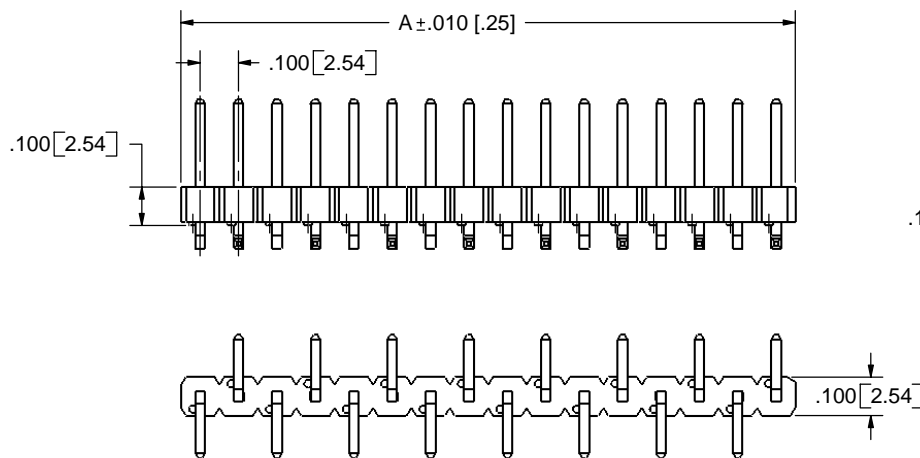
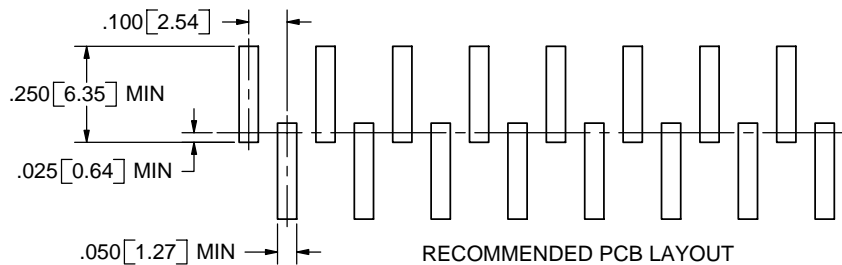
G C _ _ _ SABN - M30

NUMBER OF POSITIONS PER ROW

PLATING

ALL PLATINGS HAVE .000050" NICKEL UNDERPLATE

	CONTACT	TERMINATION
B =	.000010" GOLD	.000100" PURE TIN, MATTE
C =	.000030" GOLD	.000100" PURE TIN, MATTE
E =	.000100" PURE TIN, MATTE OVERALL	



REVISIONS

REV.	ECO. NO	DESCRIPTION	DATE	BY
A	62	ORIGINAL RELEASE	9/19/03	JFW
B	451	CORRECTED PIN ORIGINS	11/11/04	JFW
C	474	UPDATED PLATING SPECS, ADD NOTES, ADD P/N BREAKDOWN	12/7/2004	MNH

PART NUMBER	A
G_C01SABN-M30	0.100 [2.54]
G_C02SABN-M30	0.200 [5.08]
G_C03SABN-M30	0.300 [7.62]
G_C04SABN-M30	0.400 [10.16]
G_C05SABN-M30	0.500 [12.70]
G_C06SABN-M30	0.600 [15.24]
G_C07SABN-M30	0.700 [17.78]
G_C08SABN-M30	0.800 [20.32]
G_C09SABN-M30	0.900 [22.86]
G_C10SABN-M30	1.000 [25.40]
G_C11SABN-M30	1.100 [27.94]
G_C12SABN-M30	1.200 [30.48]
G_C13SABN-M30	1.300 [33.02]
G_C14SABN-M30	1.400 [35.56]
G_C15SABN-M30	1.500 [38.10]
G_C16SABN-M30	1.600 [40.64]
G_C17SABN-M30	1.700 [43.18]
G_C18SABN-M30	1.800 [45.72]
G_C19SABN-M30	1.900 [48.26]
G_C20SABN-M30	2.000 [50.80]
G_C21SABN-M30	2.100 [53.34]
G_C22SABN-M30	2.200 [55.88]
G_C23SABN-M30	2.300 [58.42]
G_C24SABN-M30	2.400 [60.96]
G_C25SABN-M30	2.500 [63.50]
G_C26SABN-M30	2.600 [66.04]
G_C27SABN-M30	2.700 [68.58]
G_C28SABN-M30	2.800 [71.12]
G_C29SABN-M30	2.900 [73.66]
G_C30SABN-M30	3.000 [76.20]
G_C31SABN-M30	3.100 [78.74]
G_C32SABN-M30	3.200 [81.28]
G_C33SABN-M30	3.300 [83.82]
G_C34SABN-M30	3.400 [86.36]
G_C35SABN-M30	3.500 [88.90]
G_C36SABN-M30	3.600 [91.44]

NOTES:

1. INSULATOR MATERIAL: PA9T.
2. CONTACT MATERIAL: PHOSPHOR BRONZE
3. PLATING: SEE TABLE
4. OPERATING TEMPERATURE: -65°C TO +125°C
5. PROCESSING TEMPERATURE: 260°C MAX FOR 120 SECS MAX.
6. UL FLAMMABILITY: 94V-0
7. VOLTAGE RATING: 600 VDC MINIMUM AT SEA LEVEL.
8. CURRENT RATING: 3 AMP
9. INSULATION RESISTANCE: 5000 MEGA OHMS.
10. MODIFICATION: SURFACE MOUNT.

CUSTOMER COPY

UNLESS OTHERWISE SPECIFIED: DIMENSIONS ARE IN INCHES[MM]		DATE	NAME
TOLERANCES: ANGULAR: ± 1° XX = ± .02 [.508] .XXX = ± .005 [.1270] XXXX = ± .0005 [.0127] PARENTHETICAL INFORMATION IS FOR REFERENCE ONLY			
INTERPRET DIMENSIONS AND GEOMETRIC TOLERANCING PER: ANSI Y14.5-1984			
THE INFORMATION HEREIN CONTAINS PROPRIETARY RIGHTS OF SULLINS ELECTRONICS AND IS NOT TO BE REPRODUCED, USED OR DISCLOSED TO OTHERS FOR ANY PURPOSE EXCEPT AS SPECIFICALLY AUTHORIZED IN WRITING BY SULLINS ELECTRONICS.		SULLINS ELECTRONICS DESCRIPTION HEADER, .100 CC PART NUMBER G_C _ _ _ SABN-M30 SIZE DWG. NO C C10058 REV C SCALE: 4:1 SHEET 1 OF 1	